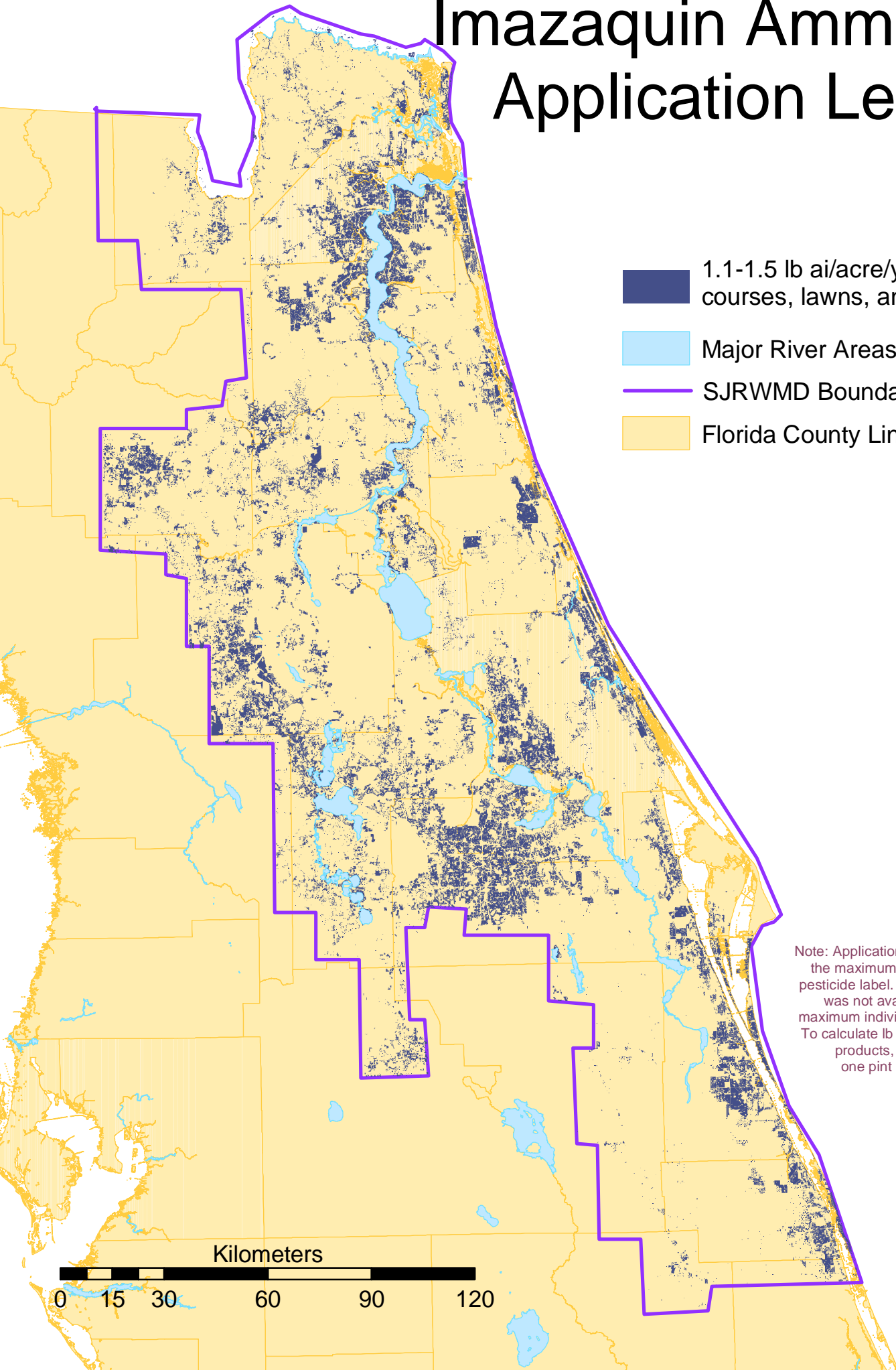

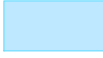




Imazaquin Ammonium Application Levels



-  1.1-1.5 lb ai/acre/year for golf courses, lawns, and sod
-  Major River Areas
-  SJRWMD Boundary
-  Florida County Lines

Note: Application amounts are based upon the maximum allowed per year by the pesticide label. Where a yearly maximum was not available, three times the maximum individual application was used. To calculate lb ai/acre for liquid pesticide products, it was assumed that one pint equaled one pound.

Kilometers

