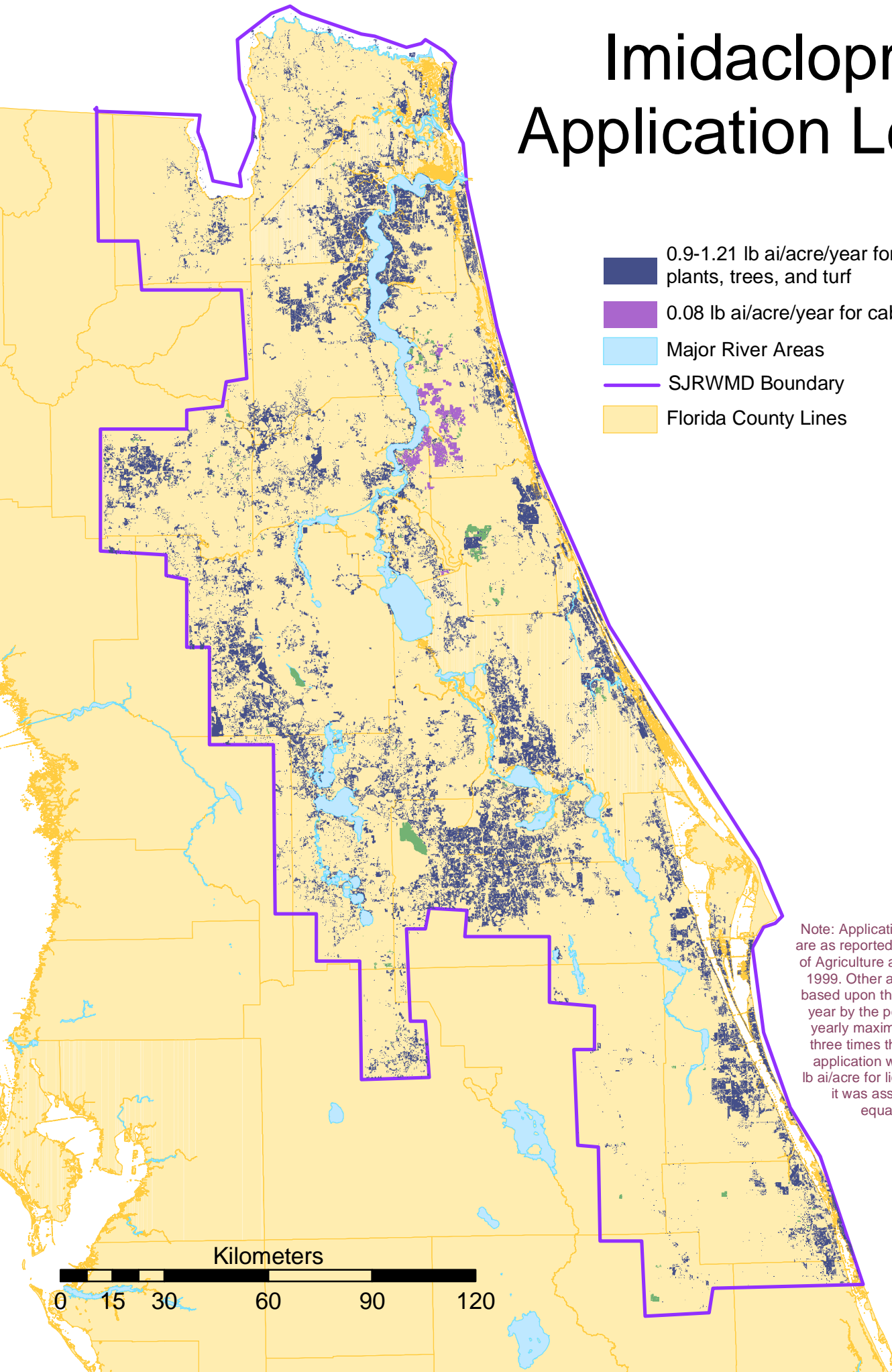


Imidacloprid Application Levels



- 0.9-1.21 lb ai/acre/year for ornamental plants, trees, and turf
- 0.08 lb ai/acre/year for cabbage
- Major River Areas
- SJRWMD Boundary
- Florida County Lines

Note: Application amounts for cabbage are as reported by Florida's Department of Agriculture and Consumer Services, 1999. Other application amounts are based upon the maximum allowed per year by the pesticide label. Where a yearly maximum was not available, three times the maximum individual application was used. To calculate lb ai/acre for liquid pesticide products, it was assumed that one pint equaled one pound.

Kilometers

