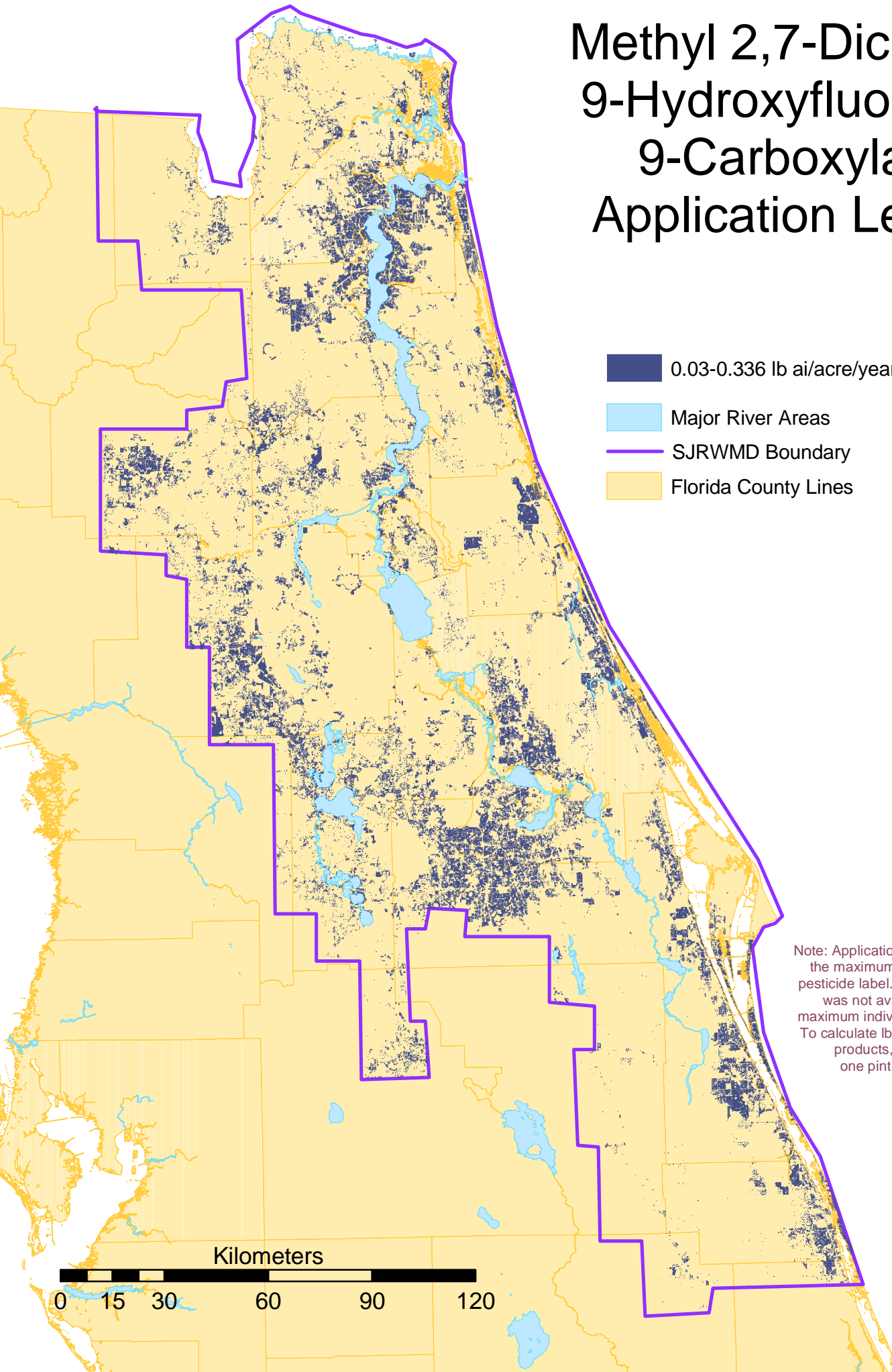


Methyl 2,7-Dichloro-9-Hydroxyfluorene-9-Carboxylate Application Levels



- 0.03-0.336 lb ai/acre/year for ornamental turf
- Major River Areas
- SJRWMD Boundary
- Florida County Lines

Note: Application amounts are based upon the maximum allowed per year by the pesticide label. Where a yearly maximum was not available, three times the maximum individual application was used. To calculate lb ai/acre for liquid pesticide products, it was assumed that one pint equaled one pound.

