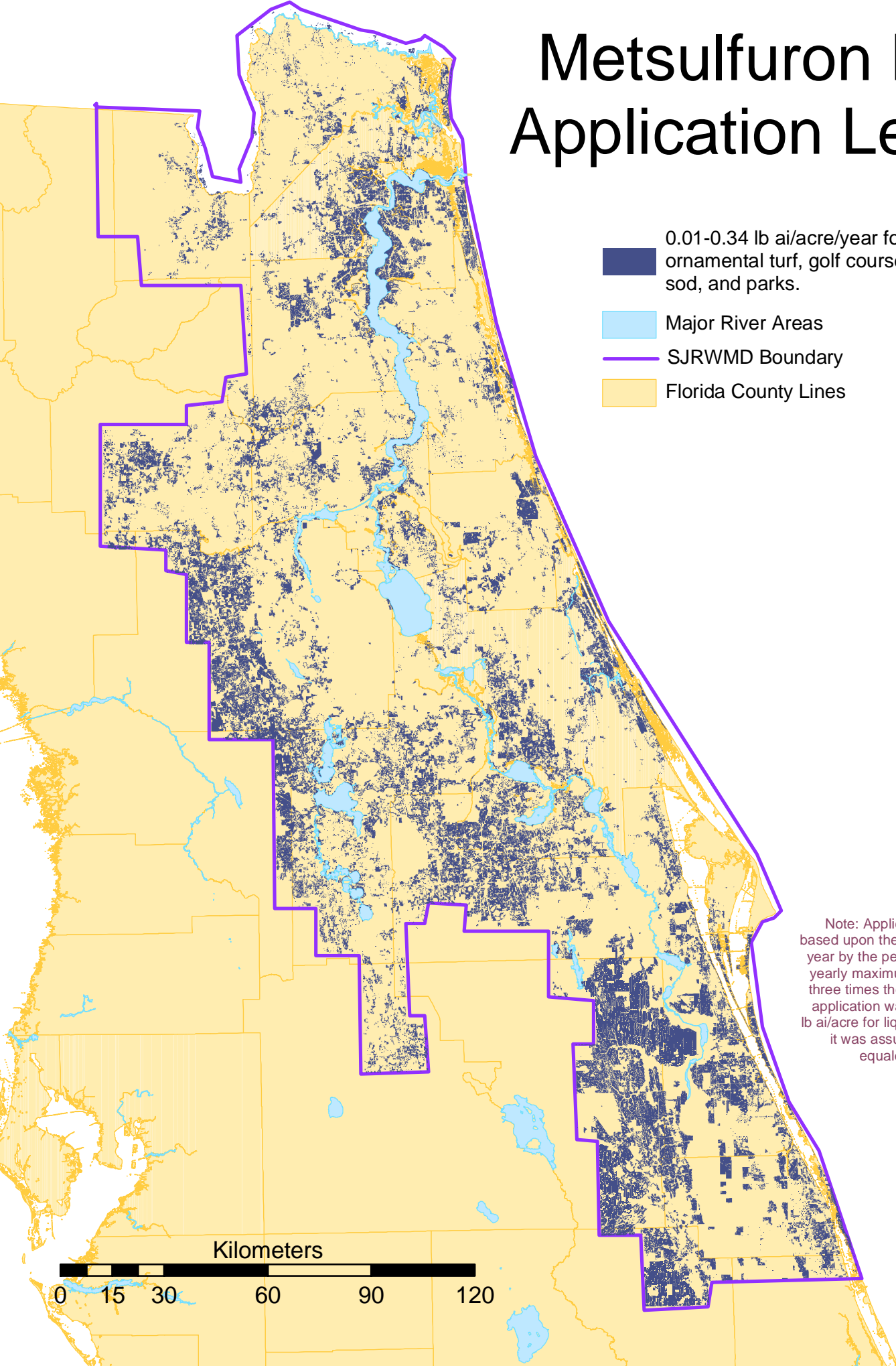


Metsulfuron Me Application Levels

- 0.01-0.34 lb ai/acre/year for pastures, ornamental turf, golf courses, cemeteries, sod, and parks.
- Major River Areas
- SJRWMD Boundary
- Florida County Lines



Note: Application amounts are based upon the maximum allowed per year by the pesticide label. Where a yearly maximum was not available, three times the maximum individual application was used. To calculate lb ai/acre for liquid pesticide products, it was assumed that one pint equaled one pound.

