


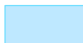


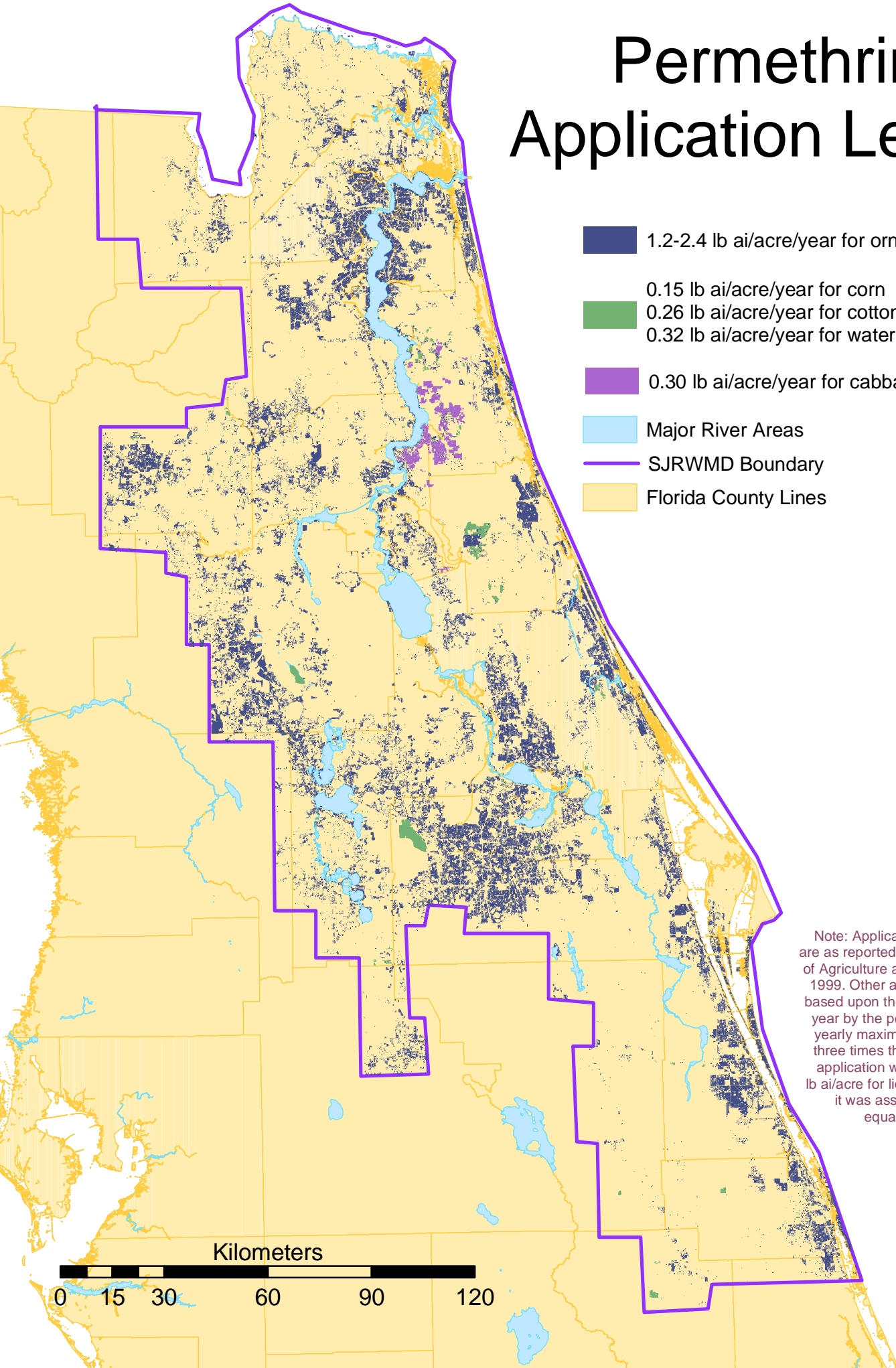


Permethrin Application Levels

-  1.2-2.4 lb ai/acre/year for ornamentals
-  0.15 lb ai/acre/year for corn
0.26 lb ai/acre/year for cotton
0.32 lb ai/acre/year for watermelon
-  0.30 lb ai/acre/year for cabbage
-  Major River Areas
-  SJRWMD Boundary
-  Florida County Lines



Note: Application amounts for crops are as reported by Florida's Department of Agriculture and Consumer Services, 1999. Other application amounts are based upon the maximum allowed per year by the pesticide label. Where a yearly maximum was not available, three times the maximum individual application was used. To calculate lb ai/acre for liquid pesticide products, it was assumed that one pint equaled one pound.

Kilometers

