
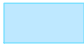


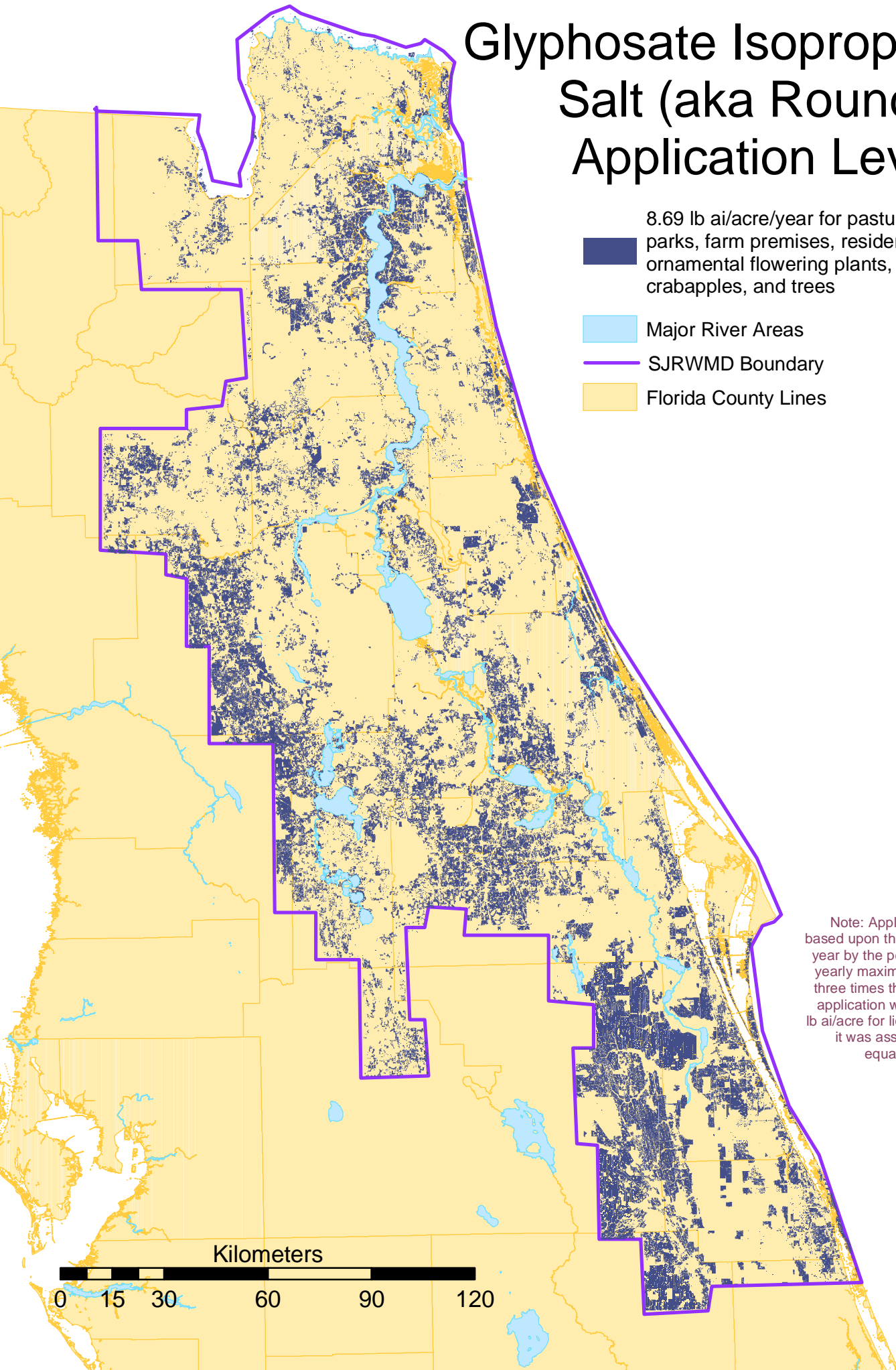


Glyphosate Isopropylamine Salt (aka Roundup) Application Levels

-  8.69 lb ai/acre/year for pastures, farm yards, parks, farm premises, residential areas, and ornamental flowering plants, lawns, turf, crabapples, and trees
-  Major River Areas
-  SJRWMD Boundary
-  Florida County Lines



Note: Application amounts are based upon the maximum allowed per year by the pesticide label. Where a yearly maximum was not available, three times the maximum individual application was used. To calculate lb ai/acre for liquid pesticide products, it was assumed that one pint equaled one pound.

Kilometers

